



Certificate SGSCH-COC-050202  
SGSCH-CW-050202

The Organization

**Wesemann GmbH**

Max-Planck-Straße 15-25, 28857 Syke, Germany



has been assessed and certified as meeting the requirements of

## FSC® Chain-of-Custody

The company was assessed against the following standards:  
FSC-STD-40-004 Version 3.0 FSC Standard for Chain of Custody Certification – April 2017,  
FSC-STD-50-001 Requirements for use of the FSC trademarks by Certificate Holders

**The scope of registration appears on page 2 of this certificate**

This certificate is valid from 5 June 2019 until 4 June 2024  
and remains valid subject to satisfactory surveillance audits.

Re-certification audit due 60 days prior to expiry date.

Issue 2. Certified since June 2019

SGS Ref # DE19/819944287

Authorised by

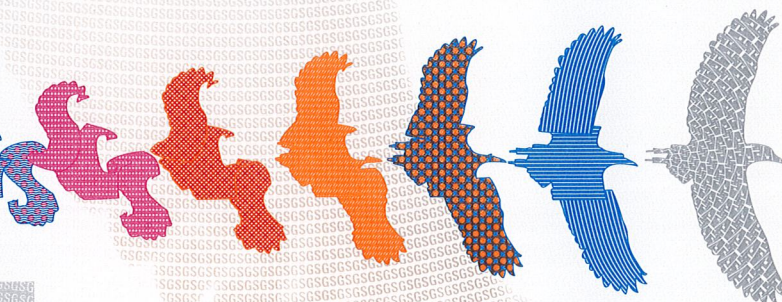
SGS Société Générale de Surveillance SA  
1, place des Alpes, 1211 Geneva, Switzerland  
t +41 (0)22 739-91-11 f +41 (0)22 739-98-86 [www.sgs.com](http://www.sgs.com)



The mark of  
responsible forestry

The validity of this certificate shall be verified on <http://info.fsc.org/>  
For the full list of product groups covered by the certificate see <http://info.fsc.org/>.  
This certificate itself does not constitute evidence that a particular product supplied by the certificate holder is FSC-certified [or FSC Controlled Wood].  
Products offered, shipped or sold by the certificate holder can only be considered covered by the scope of this certificate when the required FSC claim  
is clearly stated on sales and delivery documents. This certificate remains the property of SGS.  
The certificate and all copies or reproductions shall be returned or destroyed if requested by SGS.

Page 1 of 2



This document is issued by the Company subject to its General Conditions of Certification  
Services accessible at [www.sgs.com/terms\\_and\\_conditions.htm](http://www.sgs.com/terms_and_conditions.htm). Attention is drawn to the  
limitations of liability, indemnification and jurisdictional issues established therein. The  
authenticity of this document may be verified at <http://www.sgs.com/en/certified-clients-and-products/certified-client-directory>. Any unauthorized alteration, forgery or falsification of the  
content or appearance of this document is unlawful and offenders may be prosecuted to the  
fullest extent of the law.

## Wesemann GmbH

### Chain-of-Custody



Issue 2

Detailed scope

**Einkauf von Möbeln und Möbelteilen in FSC 100%, FSC Mix, FSC Recycled und FSC Controlled Wood. Produktion (inklusive Outsourcing), Vertrieb und Montage von Laboreinrichtungen in FSC 100%, FSC Mix, FSC Recycled und FSC Controlled Wood unter Anwendung des Transfersystems.**

**Purchase of furniture and parts of furniture in FSC 100%, FSC Mix, FSC Recycled und FSC Controlled Wood. Production (including outsourcing), sales and installation of laboratory furniture in FSC 100%, FSC Mix, FSC Recycled und FSC Controlled Wood using the transfer system.**



The mark of  
responsible forestry