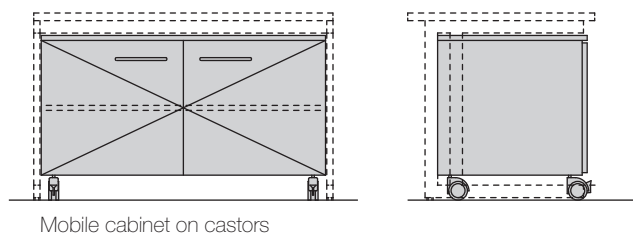
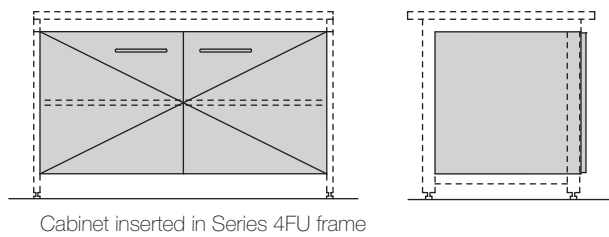
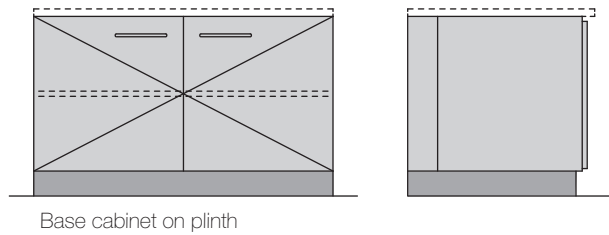


## Storage systems | 4.1 Under bench cabinets

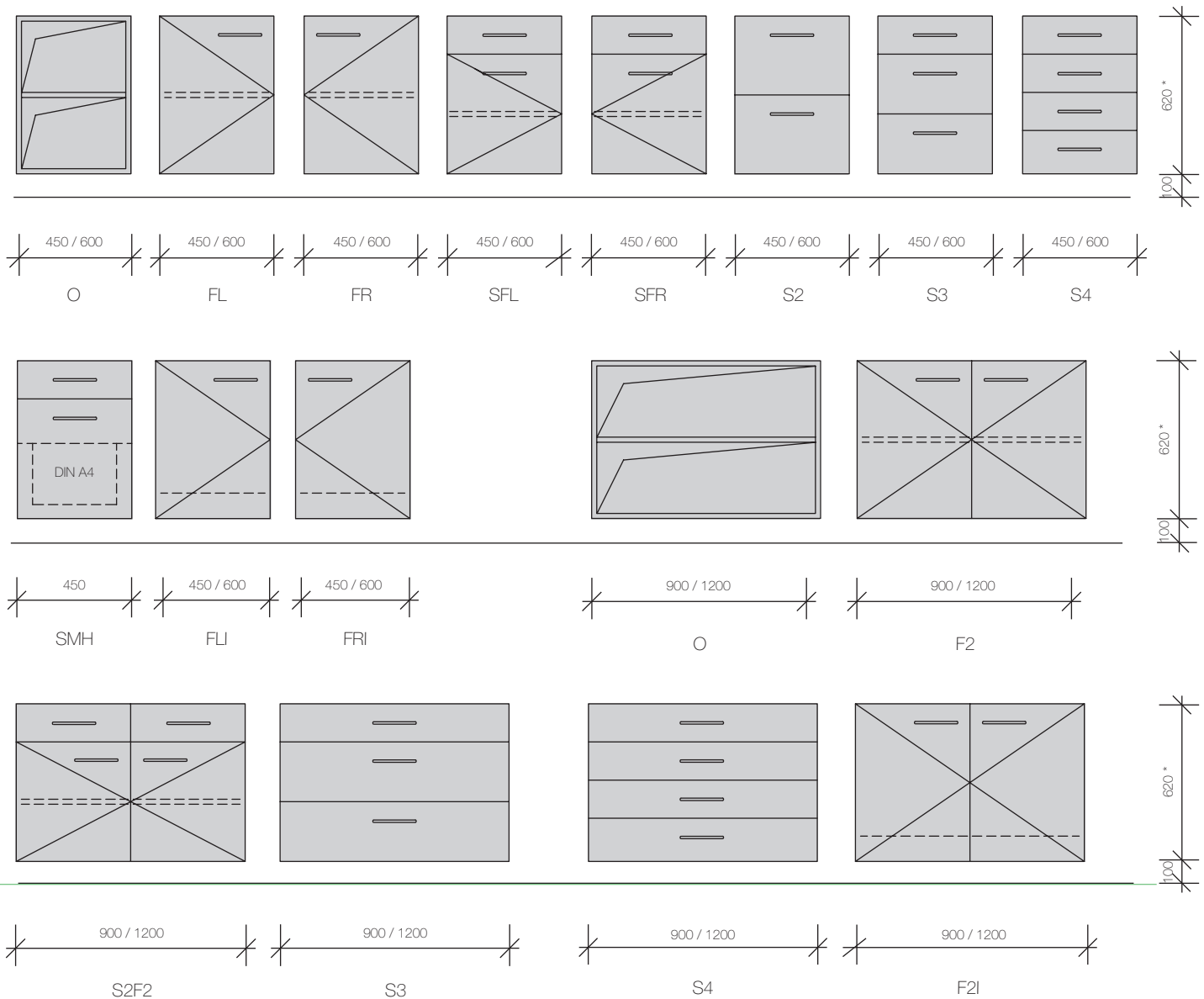


### Cabinet models

The various versions of the under bench cabinets are available in four different forms:

- Base cabinet on plinth as a substructure unit Series E
- Cabinet inserted in Series 4FU frame
- Mobile on castors, combinable with Series 4FU and CFU, mobile side table available separately.

## Storage systems | 4.1 Under bench cabinets



Under bench cabinets for seated working height of 750 mm

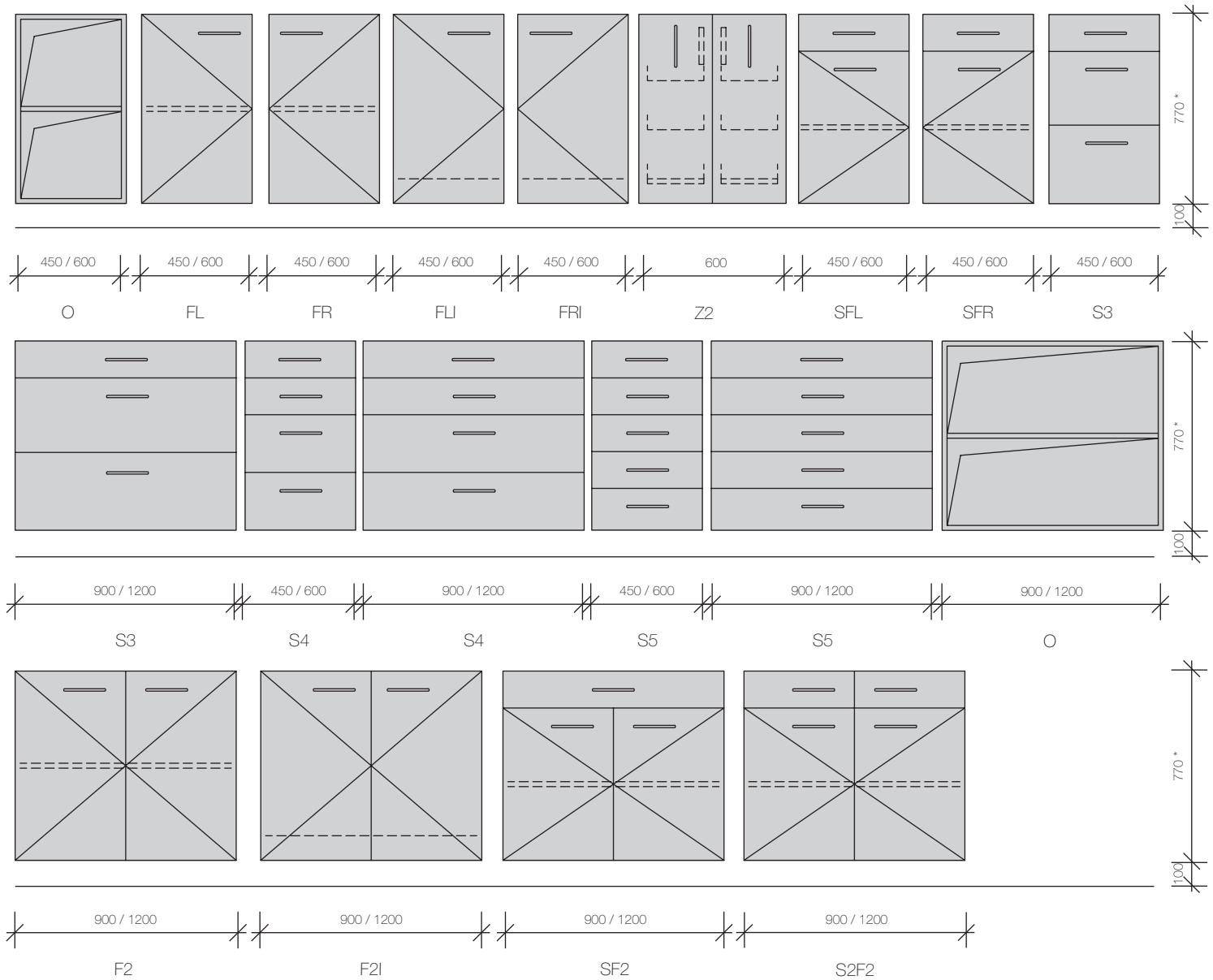
O	= open
FL	= single door, left hinged
FR	= single door, right hinged
SFL	= single drawer, single door, left hinged
SFR	= single drawer, single door, right hinged
S2	= 2 drawers
S3	= 3 drawers
S4	= 4 drawers
SMH	= single drawer, pencil tray, suspended filing system
FLI	= single door, left hinged, installation
FRI	= single door, right hinged, installation

F2	= double doors
S2F2	= 2 drawers, double doors
F2I	= double doors, installation

- Seated working height 750 mm
- Base depth 500/600 mm
- Plinth height 100 mm
- Option: label for pull
- Option: Lock

\* Valid only for series E

## Storage systems | 4.1 Under bench cabinets



Under bench cabinets for standing working height of 900 mm

O	= open
FL	= single door, left hinged
FR	= single door, right hinged
FLI	= single door, left hinged, installation
FRI	= single door, right hinged, installation
SFL	= single drawer, single door, left hinged
SFR	= single drawer, single door, right hinged
F2	= double doors
F2I	= double doors, installation
SF2	= single drawer, double doors
S2F2	= 2 drawers, double doors

Z2	= 2 pull-outs
S3	= 3 drawers
S4	= 4 drawers
S5	= 5 drawers

- Standing working height 900 mm
- Base depth 500/600 mm
- Plinth height 100 mm
- Option: label for pull
- Option: Lock

\* Valid only for series E